



**REGIONAL SPECIALISED METEOROLOGICAL CENTRE-TROPICAL CYCLONES, NEW DELHI  
TROPICAL WEATHER OUTLOOK**

**DEMS-RSMC TROPICAL CYCLONES NEW DELHI DATED 15.10.2022**

**TROPICAL WEATHER OUTLOOK FOR NORTH INDIAN OCEAN (THE BAY OF BENGAL OF BENGAL OF BENGAL OF BENGAL AND ARABIAN SEA) VALID FOR NEXT 120 HOURS  
ISSUED AT 0600 UTC OF 15.10.2022 BASED ON 0300 UTC OF 15.10.2022.**

**BAY OF BENGAL:**

YESTERDAY'S CYCLONIC CIRCULATION OVER WESTCENTRAL & ADJACENT SOUTHWEST BAY OF BENGAL LAY OVER WESTCENTRAL BAY OF BENGAL AND ALONG & OFF SOUTH ANDHRA PRADESH & NORTH TAMILNADU COASTS AT 0300 UTC OF TODAY, 15<sup>TH</sup> OCTOBER, 2022.

A CYCLONIC CIRCULATION IS LIKELY TO FORM OVER NORTH ANDAMAN SEA & NEIGHBOURHOOD AROUND 18<sup>TH</sup> OCTOBER 2022. IT WOULD MOVE WEST NORTHWESTWARDS TOWARDS WESTCENTRAL AND ADJOINING SOUTHWEST BAY OF BENGAL BECOMING LOW PRESSURE AREA AROUND 20<sup>TH</sup> OCTOBER, 2022.

SCATTERED TO BROKEN LOW AND MEDIUM CLOUDS WITH EMBEDDED INTENSE TO VERY INTENSE CONVECTION LAY OVER WESTCENTRAL BAY OF BENGAL OFF ANDHRA PRADESH COAST & SOUTH BAY OF BNGAL. SCATTERED LOW AND MEDIUM CLOUDS WITH EMBEDDED ISOLATED MODERATE TO INTENSE CONVECTION LAY OVER ANDAMAN SEA, TENASSERIM COAST AND ARAKAN COAST.

**PROBABILITY OF CYCLOGENESIS (FORMATION OF DEPRESSION) DURING NEXT 120 HRS:**

24 HOURS	24-48 HOURS	48-72 HOURS	72-96 HOURS	96-120 HOURS
NIL	NIL	NIL	NIL	NIL

**ARABIAN SEA:**

YESTERDAY'S CYCLONIC CIRCULATION OVER EASTCENTRAL ARABIAN SEA OFF KARNATAKA COAST LAY OVER CENTRAL ARABIAN SEA AT 0300 UTC OF TODAY, 15<sup>TH</sup> OCTOBER, 2022.

SCATTERED LOW AND MEDIUM CLOUDS WITH EMBEDDED ISOLATED MODERATE TO INTENSE CONVECTION LAY OVER SOUTH ARABIAN SEA AND COMORIN AREA.

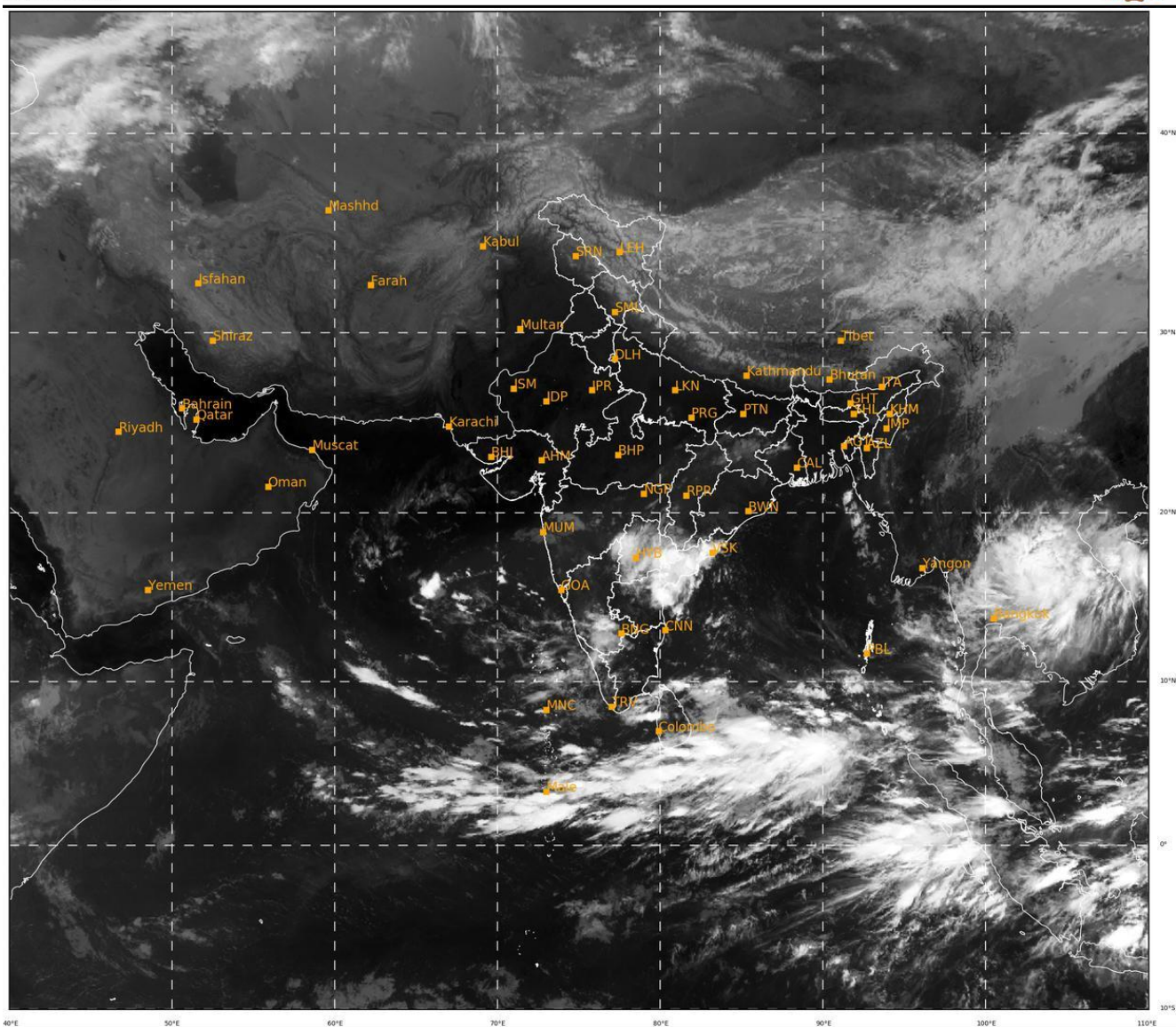
**PROBABILITY OF CYCLOGENESIS (FORMATION OF DEPRESSION) DURING NEXT 120 HRS:**

24 HOURS	24-48 HOURS	48-72 HOURS	72-96 HOURS	96-120 HOURS
NIL	NIL	NIL	NIL	NIL

**Remarks:** NIL

SAT : INSAT-3D IMG  
 IMG\_TIR1 10.8 um  
 L1C Mercator

15-10-2022/(0300 to 0326) GMT  
 15-10-2022/(0830 to 0856) IST



507

940

IMD, DELHI

Cloud distribution: (a) Isolated: <25%, Scattered:25-50%, Broken: 51-75%, Solid:>75%, Convection Intensity: (a) Weak: Cloud Top Temperature (CTT) >-25°C, (b) Moderate: CTT: - 25°C to -40°C, (c) Intense: CTT: - 41°C to -70°C and (d) Very Intense: : Less than -70°C  
 PROBABILITY OF CYCLOGENESIS (FORMATION OF DEPRESSION):NIL: 0%, LOW: 1-33%, MODERATE: 34-66% AND HIGH: 67-100%  
 This is a guidance Bulletin for WMO/ESCAP Panel Member countries. Visit respective National websites for Country specific Bulletins